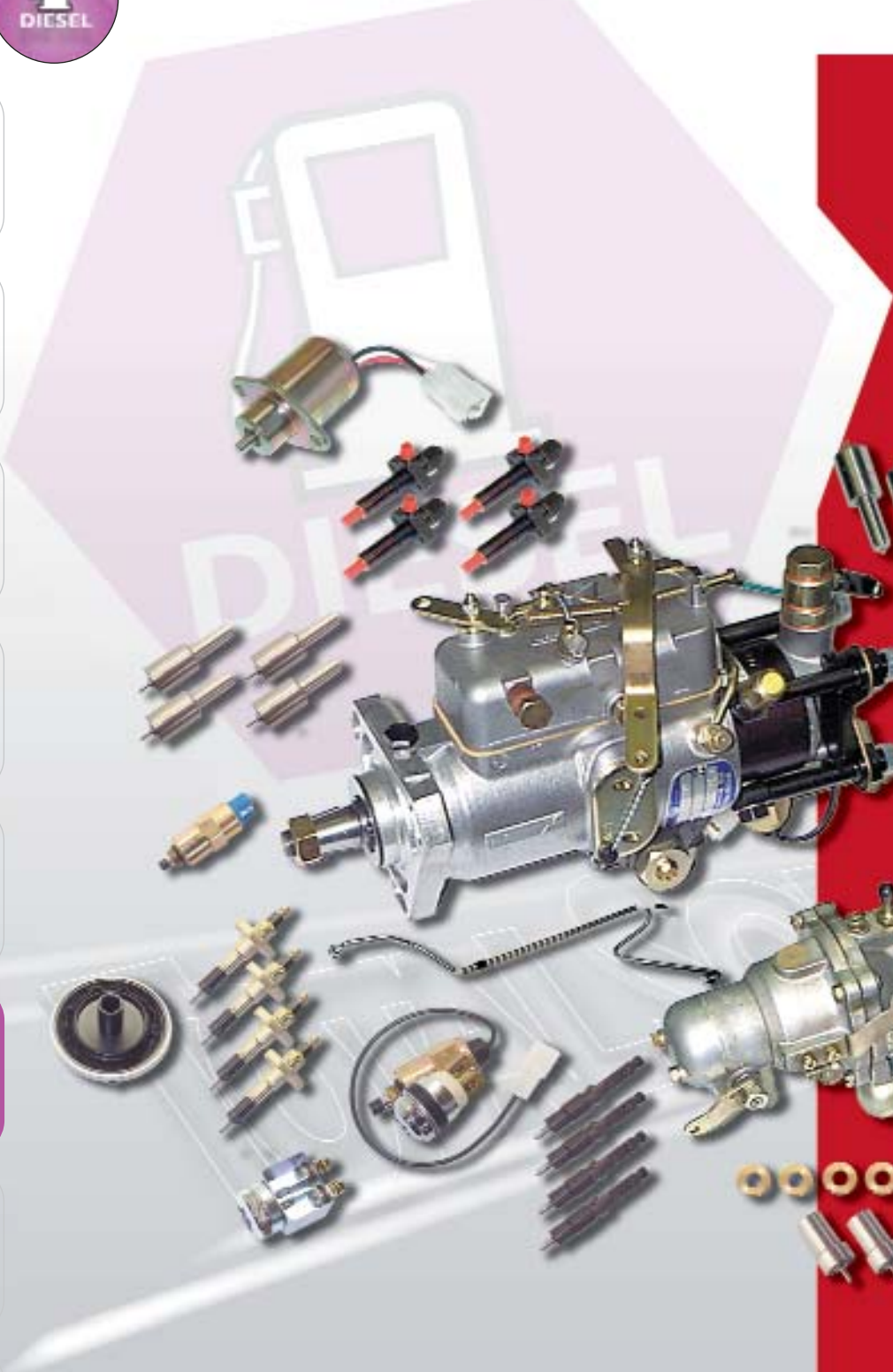




DIESEL



BOSCH
CAV
LUCAS-DELPHI
NIPPON-DENSO
ZEXEL
KIKI DIESEL



FAX FORM: GLOW PLUGS

Company:

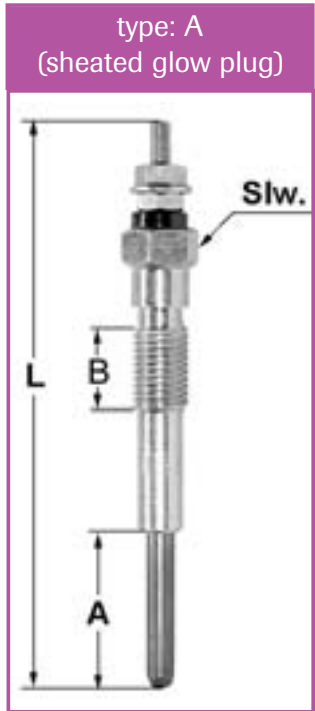
Customer code:

Name:

Fax number:

Truck make:

Truck type: Serial nr:



- 1 TY glow plug type (as per picture)
- 2 U voltage (volt)
- 3 TA thread type
- 4 Pm pitch of thread (metric)
- 5 Pi pitch of thread (inch)
- 6 RH/LH right-hand or left-hand thread
- 7 L overall length (mm)
- 8 A length of pin, as per picture
- 9 B length of thread
- 10 Slw. spanner key width
- 11 SN heating speed: T = slow (more than >15 sec.),
S = fast (less than <15 sec.)



GLOW PLUGS

REF 103TA1421



TY: A
 U: 10.5
 TA: M10
 Pm: 1.25
 Pi: -
 L: 100
 A: 28
 Slw: 12
 SN: S

Used for:
 TOYOTA

REF 103TA1422



TY: A
 U: 10.5
 TA: M12
 Pm: 1.25
 Pi: -
 L: 141
 A: 25
 Slw: 12
 SN: T

Used for:
 ISUZU
 scale 1/2

REF 103TA1411



TY: A
 U: 10.5
 TA: M10
 Pm: 1.25
 Pi: -
 L: 70
 A: 19
 Slw: 12
 SN: S

Used for:
 NISSAN, TCM

REF 103TA1412



TY: A
 U: 10.5
 TA: M10
 Pm: 1.25
 Pi: -
 L: 72
 A: 17
 Slw: 12
 SN: T

Used for:
 TCM, KUBOTA

REF 103TA1413



TY: A
 U: 10.5
 TA: M10
 Pm: 1.25
 Pi: -
 L: 68
 A: 17
 Slw: 12
 SN: T

Used for:
 NISSAN, TCM

REF 103TA1414



TY: A
 U: 10.5
 TA: M10
 Pm: 1.25
 Pi: -
 L: 74
 A: 16
 Slw: 12
 SN: T

Used for:
 TOYOTA, TCM,
 BOBCAT, KUBOTA



GLOW PLUGS



REF 103TA1415

TY: A
 U: 10.5
 TA: M12
 Pm: 1.25
 Pi: -
 L: 81
 A: 20
 Slw: 12
 SN: T

Used for:
 MITSUBISHI



REF 103TA1416

TY: A
 U: 10.5
 TA: M10
 Pm: 1.25
 Pi: -
 L: 83
 A: 22
 Slw: 12
 SN: S

Used for:
 CATERPILLAR,
 MITSUBISHI



REF 103TA1417

TY: A
 U: 10.5
 TA: M10
 Pm: 1.25
 Pi: -
 L: 84
 A: 21
 Slw: 12
 SN: T

Used for:
 YALE, MITSUBISHI



REF 103TA1418

TY: A
 U: 10.5
 TA: M10
 Pm: 1.25
 Pi: -
 L: 88
 A: 22
 Slw: 12
 SN: S

Used for:
 HYSTER, YALE,
 MAZDA



REF 103TA1419

TY: A
 U: 10.5
 TA: M10
 Pm: 1.25
 Pi: -
 L: 89
 A: 24
 Slw: 12
 SN: T

Used for:
 HYSTER, KOMATSU,
 ISUZU, TCM,
 BOBCAT



REF 103TA1420

TY: A
 U: 10.5
 TA: M10
 Pm: 1.25
 Pi: -
 L: 90
 A: 20
 Slw: 12
 SN: T

Used for:
 YALE, MAZDA



GLOW PLUGS



REF 103TA1435

TY: A
U: 11
TA: M10
Pm: 1.25
Pi: -
L: 101
A: 28
Slw: 12
SN: T

Used for:
TOYOTA, KOMATSU



REF 103TA1436

TY: A
U: 11
TA: M12
Pm: 1.25
Pi: -
L: 140
A: 24
Slw: 14
SN: S

Used for:
ISUZU, TCM

scale 1/2



REF 103TA1437

TY: A
U: 11
TA: M12
Pm: 1.25
Pi: -
L: 141
A: 24
Slw: 12
SN: S

Used for:
HYSTER, KOMATSU,
ISUZU, TCM

scale 1/2



REF 103TA1423

TY: A
U: 11
TA: M12
Pm: 1.25
Pi: -
L: 58
A: 20
Slw: 12
SN: S

Used for:
STILL, FENWICK,
LINDE, VW



REF 103TA1424

TY: A
U: 11
TA: M12
Pm: 1.25
Pi: -
L: 60
A: 20
Slw: 12
SN: T

Used for:
STILL, FENWICK,
LINDE, VW



REF 103TA1425

TY: A
U: 11
TA: M10
Pm: 1.25
Pi: -
L: 72
A: 17
Slw: 12
SN: S

Used for:
KOMATSU, YANMAR

GLOW PLUGS



REF 103TA1426

TY: A
 U: 11
 TA: M12
 Pm: 1.25
 Pi: -
 L: 73
 A: 25
 Slw: 12
 SN: T

Used for:
 CATERPILLAR, TCM,
 COVENTRY, FIAT,
 PEUGEOT



REF 103TA1427

TY: A
 U: 11
 TA: M12
 Pm: 1.25
 Pi: -
 L: 76
 A: 29
 Slw: 12
 SN: T

Used for:
 CLARK,
 CONTINENTAL



REF 103TA1428

TY: A
 U: 11
 TA: M10
 Pm: 1.25
 Pi: -
 L: 84
 A: 19
 Slw: 12
 SN: S

Used for:
 ISUZU



REF 103TA1429

TY: A
 U: 11
 TA: 5/8 UNF
 Pm: -
 Pi: 18
 L: 86
 A: 15
 Slw: 16
 SN: T

Used for:
 HYSTER, CLARK,
 PERKINS



REF 103TA1430

TY: A
 U: 11
 TA: M10
 Pm: 1.25
 Pi: -
 L: 87
 A: 22
 Slw: 12
 SN: S

Used for:
 NISSAN



REF 103TA1431

TY: A
 U: 11
 TA: M10
 Pm: 1.25
 Pi: -
 L: 88
 A: 24
 Slw: 12
 SN: S

Used for:
 HYSTER, KOMATSU,
 ISUZU, TCM,
 COVENTRY



GLOW PLUGS



REF 103TA1433

TY: A
 U: 11
 TA: M10
 Pm: 1.25
 Pi: -
 L: 96
 A: 32
 Slw: 12
 SN: S

Used for:
 TOYOTA



REF 103TA1432

TY: A
 U: 11
 TA: M10
 Pm: 1.25
 Pi: -
 L: 96
 A: 32
 Slw: 12
 SN: S

Used for:
 TOYOTA



REF 103TA1434

TY: A
 U: 11
 TA: M10
 Pm: 1.25
 Pi: -
 L: 96
 A: 32
 Slw: 12
 SN: T

Used for:
 TOYOTA



REF 103TA1439

TY: A
 U: 12
 TA: M18
 Pm: 1.5
 Pi: -
 L: 106
 A: 25
 Slw: 19
 SN: T

Used for:
 FIAT



REF 103TA1438

TY: A
 U: 12
 TA: M10
 Pm: 1.25
 Pi: -
 L: 95
 A: 21
 Slw: 12
 SN: T

Used for:
 MITSUBISHI



REF 103TA1440

TY: A
 U: 18
 TA: M12
 Pm: 1.25
 Pi: -
 L: 71
 A: 24
 Slw: 12
 SN: T

Used for:
 STILL, MERCEDES

GLOW PLUGS



REF 103TA1444

TY: A
 U: 19
 TA: M10
 Pm: 1.25
 Pi: -
 L: 101
 A: 28
 Slw: 12
 SN: T

Used for:
 TOYOTA



REF 103TA1441

TY: A
 U: 19
 TA: M18
 Pm: 1.5
 Pi: -
 L: 78
 A: 21
 Slw: 26
 SN: T

Used for:
 TOYOTA



REF 103TA1442

TY: A
 U: 19
 TA: M10
 Pm: 1.25
 Pi: -
 L: 87
 A: 25
 Slw: 12
 SN: S

Used for:
 TOYOTA



REF 103TA1443

TY: A
 U: 19
 TA: M14
 Pm: 1.25
 Pi: -
 L: 88
 A: 20
 Slw: 17
 SN: T

Used for:
 TOYOTA



REF 103TA1449

TY: A
 U: 20.5
 TA: M12
 Pm: 1.25
 Pi: -
 L: 137
 A: 23
 Slw: 12
 SN: T

Used for:
 KOMATSU, ISUZU,
 TCM

scale 1/2



REF 103TA1445

TY: A
 U: 20.5
 TA: M10
 Pm: 1.25
 Pi: -
 L: 75
 A: 19
 Slw: 12
 SN: T

Used for:
 NISSAN, TCM



GLOW PLUGS



REF 103TA1446

TY: A
U: 22.5
TA: M10
Pm: 1.25
Pi: -
L: 84
A: 23
Slw: 12
SN: T

Used for:
CLARK, MITSUBISHI



REF 103TA1447

TY: A
U: 20.5
TA: M10
Pm: 1.25
Pi: -
L: 93
A: 23
Slw: 12
SN: T

Used for:
KOMATSU, ISUZU, TCM



REF 103TA1448

TY: A
U: 20.5
TA: M10
Pm: 1.25
Pi: -
L: 99
A: 28
Slw: 12
SN: T

Used for:
TOYOTA



REF 103TA1450

TY: A
U: 21.5
TA: M10
Pm: 1.25
Pi: -
L: 95
A: 22
Slw: 12
SN: T

Used for:
TOYOTA



REF 103TA1451

TY: A
U: 22
TA: M10
Pm: 1.25
Pi: -
L: 86
A: 25
Slw: 12
SN: T

Used for:
CLARK, CATERPILLAR, MITSUBISHI



REF 103TA1455

TY: A
U: 22.5
TA: M10
Pm: 1.25
Pi: -
L: 137
A: 30
Slw: 14
SN: T

Used for:
MITSUBISHI

scale 1/2

GLOW PLUGS



REF 103TA1452

TY: A
 U: 22.5
 TA: M12
 Pm: 1.25
 Pi: -
 L: 81
 A: 20
 Slw: 12
 SN: T

Used for:
 MITSUBISHI



REF 103TA1453

TY: A
 U: 22.5
 TA: M10
 Pm: 1.25
 Pi: -
 L: 90
 A: 20
 Slw: 12
 SN: S

Used for:
 MITSUBISHI



REF 103TA1491

TY: A
 U: 22.5
 TA: M18
 Pm: 1.5
 Pi: -
 L: 91
 A: 19
 Slw: 19
 SN: T

Used for:
 KOMATSU, ISUZU,
 TCM



REF 103TA1459

TY: A
 U: 23
 TA: M10
 Pm: 1.25
 Pi: -
 L: 100
 A: 28
 Slw: 12
 SN: S

Used for:
 TOYOTA



REF 103TA1456

TY: A
 U: 23
 TA: M10
 Pm: 1.25
 Pi: -
 L: 70
 A: 19
 Slw: 12
 SN: S

Used for:
 NISSAN, TCM



REF 103TA1457

TY: A
 U: 23
 TA: M10
 Pm: 1.25
 Pi: -
 L: 79
 A: 19
 Slw: 12
 SN: T

Used for:
 NISSAN



GLOW PLUGS



REF 103TA1458

TY: A
 U: 23
 TA: M10
 Pm: 1.25
 Pi: -
 L: 96
 A: 32
 Slw: 12
 SN: T

Used for:
 TOYOTA



REF 103TA1462

TY: A
 U: 24
 TA: 3/8 UNF
 Pm: -
 Pi: 24
 L: 121
 A: 27
 Slw: 10
 SN: T

Used for:
 CATERPILLAR



REF 103TA1460

TY: A
 U: 24
 TA: M10
 Pm: 1.25
 Pi: -
 L: 71
 A: 19
 Slw: 12
 SN: S

Used for:
 NISSAN, TCM



REF 103TA1461

TY: A
 U: 24
 TA: M10
 Pm: 1.25
 Pi: -
 L: 87
 A: 22
 Slw: 12
 SN: S

Used for:
 NISSAN, TCM



REF 103TA1400

TY: A
 U: 5
 TA: M10
 Pm: 1.25
 Pi: -
 L: 90
 A: 24
 Slw: 12
 SN: S

Used for:
 KOMATSU, ISUZU,
 TCM



REF 103TA1402

TY: A
 U: 8
 TA: M10
 Pm: 1.25
 Pi: -
 L: 101
 A: 28
 Slw: 12
 SN: S

Used for:
 TOYOTA



GLOW PLUGS



REF 103TA1401

TY: A
 U: 8
 TA: M14
 Pm: 1.25
 Pi: -
 L: 89
 A: 20
 Slw: 17
 SN: S

Used for:
 TOYOTA



REF 103TA1403

TY: A
 U: 8.5
 TA: M10
 Pm: 1.25
 Pi: -
 L: 100
 A: 28
 Slw: 12
 SN: S

Used for:
 TOYOTA



REF 103TA1404

TY: A
 U: 8.5
 TA: M10
 Pm: 1.25
 Pi: -
 L: 101
 A: 28
 Slw: 12
 SN: S

Used for:
 KOMATSU



REF 103TA1405

TY: A
 U: 9
 TA: M10
 Pm: 1.25
 Pi: -
 L: 84
 A: 18
 Slw: 12
 SN: S

Used for:
 ISUZU



REF 103TA1407

TY: A
 U: 9
 TA: M10
 Pm: 1.25
 Pi: -
 L: 90
 A: 24
 Slw: 12
 SN: T

Used for:
 KOMATSU, ISUZU,
 TCM



REF 103TA1406

TY: A
 U: 9
 TA: M10
 Pm: 1.25
 Pi: -
 L: 90
 A: 24
 Slw: 12
 SN: S

Used for:
 ISUZU



GLOW PLUGS



REF 103TA1408

TY: A
 U: 9.5
 TA: M10
 Pm: 1.25
 Pi: -
 L: 71
 A: 20
 Slw: 12
 SN: S

Used for:
 NISSAN, TCM



REF 103TA1409

TY: A
 U: 9.5
 TA: M18
 Pm: 1.5
 Pi: -
 L: 93
 A: 15
 Slw: 21
 SN: T

Used for:
 FENWICK, DEUTZ,
 LINDE



REF 103TA1410

TY: A
 U: 9.5
 TA: M18
 Pm: 1.5
 Pi: -
 L: 94
 A: 26
 Slw: 21
 SN: T

Used for:
 PEUGEOT



REF 103TA1397

TY: B
 U: 0.9
 TA: M18
 Pm: 1.5
 Pi: -
 L: 88
 A: 26
 Slw: 21
 SN: T

Used for:
 STILL, STEINBOCK,
 MERCEDES



REF 103TA1399

TY: B
 U: 1.7
 TA: M14
 Pm: 1.25
 Pi: -
 L: 107
 A: 19
 Slw: 18
 SN: T

Used for:
 COVENTRY



REF 103TA1398

TY: B
 U: 1.7
 TA: M18
 Pm: 1.5
 Pi: -
 L: 81
 A: 24
 Slw: 26
 SN: T

Used for:
 TOYOTA



GLOW PLUGS



REF 103TA1472

TY: C

U: 12

TA: 7/8 UNF

Pm: -

Pi: 14

L: 58

A: 22

Slw: 24

SN: S

Used for:
HYSTER, YALE, CLARK,
CATERPILLAR, PERKINS,
FENWICK, LANSING



REF 103TA1469

TY: C

U: 12

TA: 7/8 UNF

Pm: -

Pi: 14

L: 58

A: 22

Slw: 24

SN: S

Used for:
HYSTER, CLARK,
PERKINS, STEINBOCK,
COVENTRY, LANSING



REF 103TA1493

TY: C

U: 12

TA: 1/2 BSP

Pm: -

Pi: 14

L: 59

A: 20

Slw: 24

SN: S

Used for:
FIAT



REF 103TA1506

TY: C

U: 9.5

TA: M20

Pm: 1.5

Pi: -

L: 90

A: 22

Slw: 21

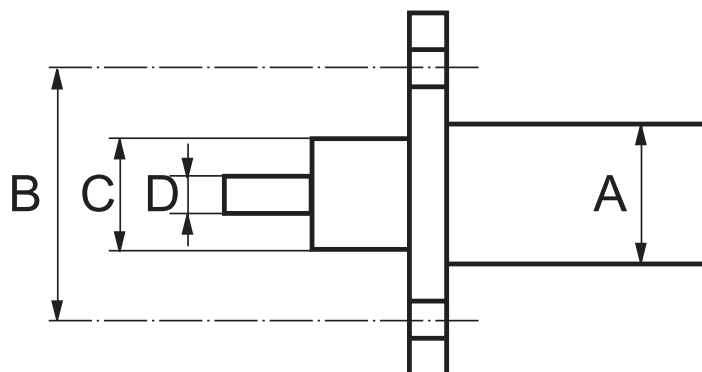
SN: T

Used for:
DEUTZ







TYPE 1503 ES

- 3 wires
- A = 38 mm
- B = 52 mm



STOP SOLENOIDS

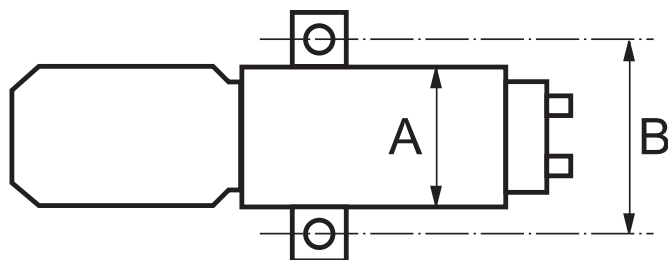
PICTURE / REF	VOLTAGE	C (mm)	D (mm)	USED FOR
 REF 115TA4609	12 V	24,75	4	KOOIAAP KUBOTA
 REF 115TA4610	12 V	M25 x 1,5	5	ISUZU TCM
 REF 115TA4611	12 V	24,75	6	CLARK
 REF 115TA4612	12 V	24,75	6	HYSTER JUNGHEINRICH PERKINS STEINBOCK





STOP SOLENOIDS

TYPE 1751

- 2 screw terminals
- A = 44,50 mm
- B = 50,80 mm

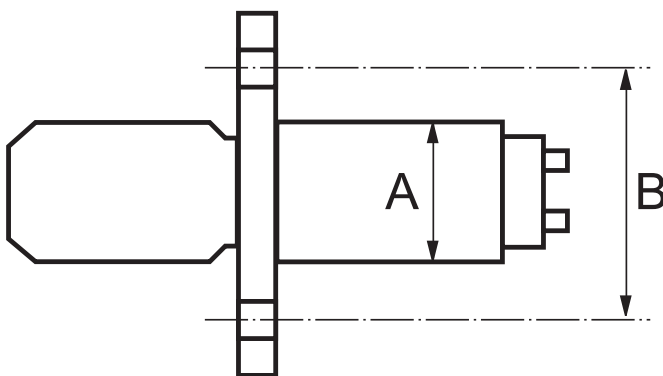


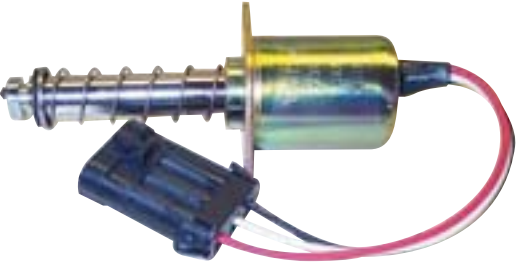
	VOLTAGE	USED FOR	REF
	24 V	MITSUBISHI TOYOTA YALE	115TA4613
	12 V	HITACHI	123TA7632



TYPE 1751 ES




- 3 wires
- A = 44,50 mm
- B = 63,50 mm



	VOLTAGE	USED FOR	REF
	12 V	CLARK	115TA4614

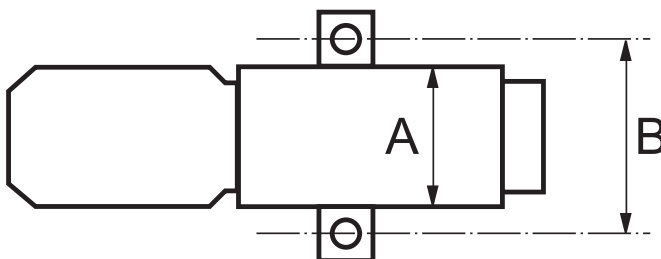



STOP SOLENOIDS

	VOLTAGE	USED FOR	REF
	12 V	CLARK	115TA4615
	24 V	KALMAR SCANIA	115TA4616
	24 V	STILL	115TA4617

TYPE 1756 ES

- 3 wires
- A = 44,50 mm
- B = 50,80 mm



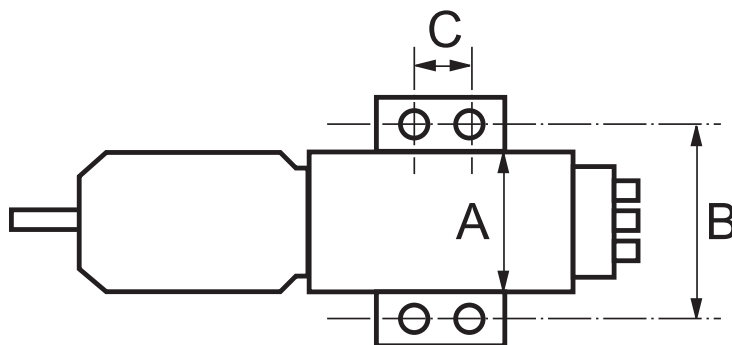
PICTURE / REF	VOLTAGE	USED FOR	REF
	24 V	KALMAR VOLVO	115TA4618





STOP SOLENOIDS

TYPE 2001/2003

- 3 screw terminals
- A = 50,80 mm
- B = 63,50 mm
- C = 38,10 mm



PICTURE / REFERENCE	VOLTAGE	USED FOR	REF
	12 V	HYSTER PERKINS	115TA4619
	24 V	PERKINS SISU	115TA4620

***For other types,
please contact
our sales department.***



**PLEASE INDICATE TRUCK DETAILS
AND SERIAL NUMBER
OR REFERENCE ON GLOW HEATER**



**BOSCH
CAV (LUCAS)
CAV - ROTODIESEL
LUCAS-DELPHI
NIPPON DENSO
ZEXEL (DIESEL KIKI)**

GLOW HEATERS, REPAIR OF INJECTION PUMPS



OEM references are purely indicative and do not imply that parts originate from the forklift manufacturer.

NEW AND REBUILT INJECTION PUMPS

NIPPON DENSO



09600024911



This is only a selection of injection pumps. For all other pumps call our sales department !

ZEXEL (DIESEL KIKI)



1014339390



1047454124





OEM references are purely indicative and do not imply that parts originate from the forklift manufacturer.

BOSCH



This is only a selection of injection pumps. For all other pumps call our sales department !



0400866093

NEW AND REBUILT INJECTION PUMPS

CAV (LUCAS)



DPA3363F841

K3942F993N

FUEL FILLER CAPS



Nr	Used for	REF
1	Linde (with breather)	124TA1603
	Linde (without breather)	124TA1604
2	Linde	124TA1605
3	Toyota	124TA1606
4	Mitsubishi	124TA1607
5	Hyster	124TA1608
6	Komatsu	124TA1609

Nr	Used for	REF
7	Komatsu	124TA1610
8	Hyster	124TA1611
9	Manitou	124TA1612
10	Clark	124TA1613
11	Linde	124TA1614
12	Universal	124TA1615

OIL FILLER CAPS



Nr	Used for	REF
1	komatsu	124TA1616
2	Mitsubishi	124TA1617
3	Clark	124TA1618
4	Caterpillar	124TA1619

Nr	Used for	REF
5	Nissan	124TA1620
6	Hyster	124TA1621
7	Linde	124TA1622