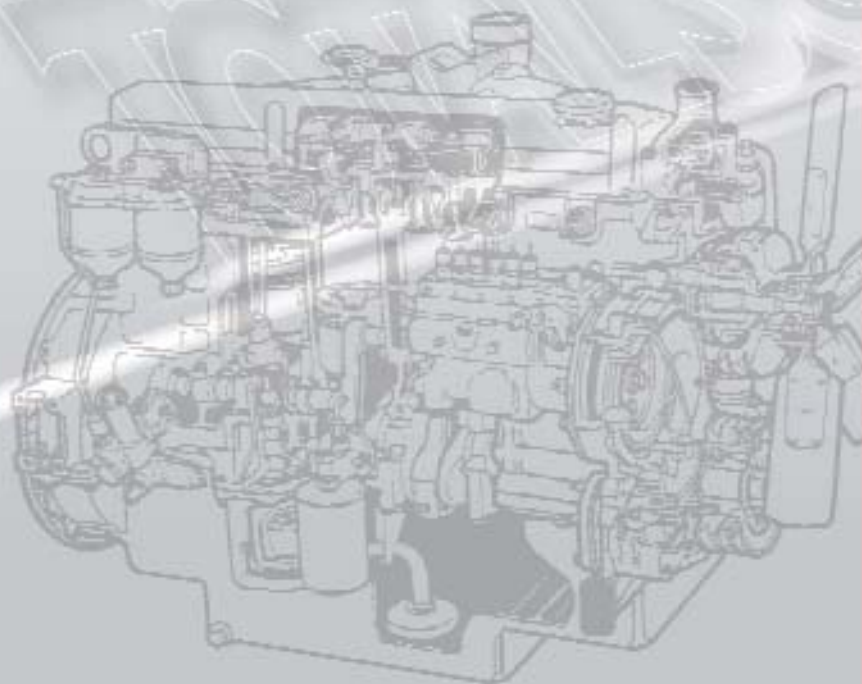
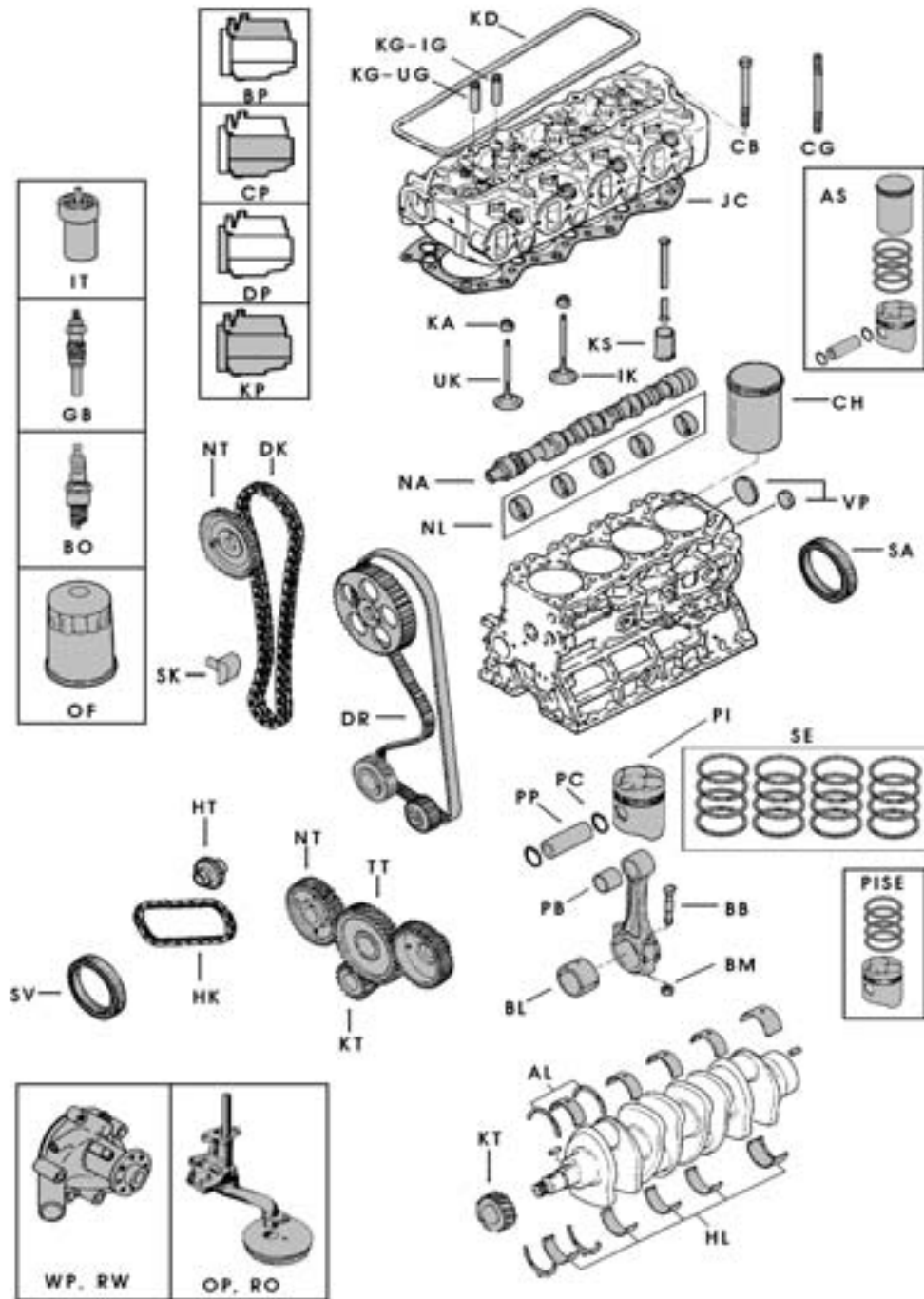




- CATERPILLAR
- CHRYSLER
- CONTINENTAL
- CUMMINS
- DETROIT • DEUTZ
- FIAT • FORD • GM
- ISUZU • KOMATSU
- KUBOTA • MAZDA
- MERCEDES
- MITSUBISHI
- NISSAN • PERKINS
- PEUGEOT
- RENAULT
- TOYOTA
- VOLKSWAGEN
- VOLVO
- WAUKESHA
- YANMAR





AL	Thrust washer set	HT	Gear, hydraulic pump drive	PB	Bush, piston pin
AS	Sleeve assy. (piston, rings, sleeve)	IG	Guide, intake valve	PC	Retaining ring, piston pin
BB	Bolt, connecting rod	IK	Intake valve	PI	Piston (with / without pin)
BL	Bearing set, connecting rod	IT	Nozzle	PISE	Piston (with/without pin)+ring set
BM	Nut, connecting rod	JC	Gasket, cylinder head	PP	Piston pin
BO	Spark plug	KA	Valve seal	RO	Repair kit, oil pump
BP	Gasket kit, valve regrind	KD	Gasket, cylinder head cover	RW	Repair kit, water pump
CB	Bolt, cylinder head	KG	Guide, intake/exhaust valve	SA	Oil seal crankshaft, rear
CG	Stud, cylinder head	KP	Overhaul gasket kit	SE	Ring set
CH	Sleeve	KS	Tappet, valve	SK	Chain tensioner
CP	Gasket kit, bottom	KT	Gear, crankshaft	SV	Oil seal crankshaft, front
DK	Chain, timing	NA	Camshaft	TT	Gear idle
DP	Gasket kit, distribution	NL	Camshaft bearing set	UG	Guide, exhaust valve
DR	Belt, timing	NT	Gear, camshaft	UK	Valve, exhaust
GB	Glow plug	OF	Oil filter	VP	Kit expansion plugs
HK	Chain, hydraulic pump drive	OK	Chain, oil pump drive	WP	Water pump
HL	Main bearing set	OP	Oil pump		

ENGINE TYPES

• CATERPILLAR:

1404

• CONTINENTAL:

F135

F163

F227

F245

G193

Y112

TM20

TM27

TMD27

• DEUTZ:

F3L913G

GF3L913

F3 / 4 / 6 / L912 (W)

• FIAT:

8035-05-359

8045-05-359

8141-67-200

M705.19.149A1000

M205.16AA.149A000

8055.05.250

• FORD:

4-172

4-192

• GM:

4181

4153

6250

V6-4,3

2,2L

• ISUZU:

C240

C221

4FA1

4FE1

DA220

4JB1

G201

4JG2

• KOMATSU:

4D95

6D95

4D94E

6D105-1

4D105

• MAZDA:

XA

VA

UA

FE

HA

ZB

F2

TM

• MERCEDES:

OM314

• MITSUBISHI:

4DQ5(0)

S4E

S4E2

S6E

S6E2

4G33

4G52

4G53

4G54

S4S

4G64

4G63

KE42

4G15

S4Q2

4DQ7

4G41

6G72

KE46

4G15

S6S

S6K

• NISSAN:

SD22

SD25

SD33T

J15

H20

D11

Z24

A15

A12

H25

TD27

BD30

H15

H30

TB42

TD42

P40

• PERKINS:

4.236

4.203

4.2482

4.108

6.354

6.3544

1004.4

903-27

4.203.2

D3.152

1006.6

• PEUGEOT:

XD3P

XDP 4.88

XDP 4.90

XC7P

XN1P

• TOYOTA:

3P

4P

1Z

5R

5P

2J

4Y

5K

1DZ

11Z

2H

H

V1502

VT1502

V1512

2Z

V1512T

F

2F

3F

12Z

14Z

13Z

• VOLVO:

TD61 AW

TD71 AW

TD100 G

• WAUKESHA:

D155G

D176G

Figura partei uzorice: **GM 41B1**

TYPE: Gasoline		IN: HYSTER		Nr. 1					
3 Cyl Bore: 4 (101.6 mm)									
PART	REFERENCE	REMARKS							
	1-55540-512 740-510-057								
	1-55540-517 740-510-050								
	1-55540-510 5475-510-1 (101.6 mm)	None original							
	1-55540-517 5475-510-1 (101.6 mm)								
	1-55540-514 5475-510-1 (101.6 mm)	None original							
	1-55540-515 5475-510-1 (101.6 mm)								
	1-55540-513 5475-510-1 (101.6 mm)	None original							
	1-55540-511 5475-510-1 (101.6 mm)								
	1-55540-516	None original							
	1-55540-517								
	1-55540-518								
	1-55540-519								
	1-55540-520								
	1-55540-521								
	1-55540-522								
	1-55540-523								
	1-55540-524								
	1-55540-525								

For any other engine parts please contact us!

Figura partei uzorice: **GM 41B1**

TYPE: Gasoline		IN: HYSTER		Nr. 1					
3 Cyl Bore: 4 (101.6 mm)									
PART	REFERENCE	REMARKS							
	1-55540-511								
	1-55540-512								
	1-55540-513								
	1-55540-514								
	1-55540-515								
	1-55540-516								
	1-55540-517								
	1-55540-518								
	1-55540-519								
	1-55540-520								
	1-55540-521								
	1-55540-522								
	1-55540-523								
	1-55540-524								
	1-55540-525								

For any other engine parts please contact us!

Figura partei uzorice: **ISUZU C240**

TYPE: Diesel		IN: KOMATSU		Nr. 1					
3 Cyl Bore: 86 mm									
TCM HYSTER									
PART	REFERENCE	REMARKS							
	1-11200-110	None original							
	1-11200-111								
	1-11200-112								
	1-11200-113								
	1-11200-114								
	1-11200-115								
	1-11200-116								
	1-11200-117								
	1-11200-118								
	1-11200-119								
	1-11200-120	None original							
	1-11200-121								
	1-11200-122	None original							
	1-11200-123								
	1-11200-124	None original							
	1-11200-125								
	1-11200-126	None original							
	1-11200-127								
	1-11200-128								
	1-11200-129								
	1-11200-130								
	1-11200-131								
	1-11200-132								
	1-11200-133								
	1-11200-134								
	1-11200-135								

For any other engine parts please contact us!

Figura partei uzorice: **ISUZU C240**

TYPE: Diesel		IN: KOMATSU		Nr. 1					
3 Cyl Bore: 86 mm									
TCM HYSTER									
PART	REFERENCE	REMARKS							
	1-11200-136	None original							
	1-11200-137								
	1-11200-138								
	1-11200-139								
	1-11200-140	None original							
	1-11200-141								
	1-11200-142								
	1-11200-143								
	1-11200-144	None original							
	1-11200-145								
	1-11200-146								
	1-11200-147								
	1-11200-148	None original							
	1-11200-149								
	1-11200-150	None original							
	1-11200-151								
	1-11200-152	None original							
	1-11200-153								

For any other engine parts please contact us!

Tipice parte uzate la:

MAZDA VA

TYPE		IN		VALVE		Nr. 2			
Gasoline		4 Cyl		HYSTER					
Bore: 82 mm									
PART	REFERENȚĂ	REMARKS							
	1. 15500-100 2. 15500-101 3. 15500-102			4. 15500-103		5. 15500-104			
	1. 15500-105 2. 15500-106 3. 15500-107 4. 15500-108								
	1. 15500-109 2. 15500-110 3. 15500-111 4. 15500-112 5. 15500-113 6. 15500-114 7. 15500-115 8. 15500-116 9. 15500-117 10. 15500-118 11. 15500-119 12. 15500-120	13. 15500-121 14. 15500-122 15. 15500-123 16. 15500-124 17. 15500-125 18. 15500-126 19. 15500-127 20. 15500-128 21. 15500-129 22. 15500-130		23. 15500-131 24. 15500-132 25. 15500-133 26. 15500-134 27. 15500-135 28. 15500-136 29. 15500-137 30. 15500-138 31. 15500-139 32. 15500-140		33. 15500-141 34. 15500-142 35. 15500-143 36. 15500-144 37. 15500-145 38. 15500-146 39. 15500-147 40. 15500-148 41. 15500-149 42. 15500-150		43. 15500-151 44. 15500-152 45. 15500-153 46. 15500-154 47. 15500-155 48. 15500-156 49. 15500-157 50. 15500-158 51. 15500-159 52. 15500-160	

For any other engine parts please contact us!

Tipice parte uzate la:

MAZDA VA

TYPE		IN		VALVE		Nr. 2	
Gasoline		4 Cyl		HYSTER			
Bore: 82 mm							
PART	REFERENȚĂ	REMARKS					
	1. 15500-161 2. 15500-162 3. 15500-163 4. 15500-164 5. 15500-165 6. 15500-166 7. 15500-167 8. 15500-168 9. 15500-169 10. 15500-170						
	1. 15500-171 2. 15500-172 3. 15500-173 4. 15500-174 5. 15500-175 6. 15500-176 7. 15500-177 8. 15500-178 9. 15500-179 10. 15500-180						
	1. 15500-181 2. 15500-182 3. 15500-183 4. 15500-184 5. 15500-185 6. 15500-186 7. 15500-187 8. 15500-188 9. 15500-189 10. 15500-190						
	1. 15500-191 2. 15500-192 3. 15500-193 4. 15500-194 5. 15500-195 6. 15500-196 7. 15500-197 8. 15500-198 9. 15500-199 10. 15500-200						
	1. 15500-201 2. 15500-202 3. 15500-203 4. 15500-204 5. 15500-205 6. 15500-206 7. 15500-207 8. 15500-208 9. 15500-209 10. 15500-210						

For any other engine parts please contact us!

Tipice parte uzate la:

MAZDA XA

TYPE		IN		VALVE		Nr. 1	
Diesel		4 Cyl		HYSTER			
Bore: 88.95 mm							
PART	REFERENȚĂ	REMARKS					
	1. 15500-211 2. 15500-212 3. 15500-213 4. 15500-214 5. 15500-215 6. 15500-216 7. 15500-217 8. 15500-218 9. 15500-219 10. 15500-220						
	1. 15500-221 2. 15500-222 3. 15500-223 4. 15500-224 5. 15500-225 6. 15500-226 7. 15500-227 8. 15500-228 9. 15500-229 10. 15500-230						
	1. 15500-231 2. 15500-232 3. 15500-233 4. 15500-234 5. 15500-235 6. 15500-236 7. 15500-237 8. 15500-238 9. 15500-239 10. 15500-240						
	1. 15500-241 2. 15500-242 3. 15500-243 4. 15500-244 5. 15500-245 6. 15500-246 7. 15500-247 8. 15500-248 9. 15500-249 10. 15500-250						

For any other engine parts please contact us!

Tipice parte uzate la:

MAZDA XA

TYPE		IN		VALVE		Nr. 1	
Diesel		4 Cyl		HYSTER			
Bore: 88.95 mm							
PART	REFERENȚĂ	REMARKS					
	1. 15500-251 2. 15500-252 3. 15500-253 4. 15500-254 5. 15500-255 6. 15500-256 7. 15500-257 8. 15500-258 9. 15500-259 10. 15500-260						
	1. 15500-261 2. 15500-262 3. 15500-263 4. 15500-264 5. 15500-265 6. 15500-266 7. 15500-267 8. 15500-268 9. 15500-269 10. 15500-270						
	1. 15500-271 2. 15500-272 3. 15500-273 4. 15500-274 5. 15500-275 6. 15500-276 7. 15500-277 8. 15500-278 9. 15500-279 10. 15500-280						
	1. 15500-281 2. 15500-282 3. 15500-283 4. 15500-284 5. 15500-285 6. 15500-286 7. 15500-287 8. 15500-288 9. 15500-289 10. 15500-290						
	1. 15500-291 2. 15500-292 3. 15500-293 4. 15500-294 5. 15500-295 6. 15500-296 7. 15500-297 8. 15500-298 9. 15500-299 10. 15500-300						

For any other engine parts please contact us!

EXAMPLES OF OUR ENGINE PARTS CATALOGUE

Engina parte uzda la:

MITSUBISHI 545

TYPE Diesel
4 Cyl
Bore 94 mm

IN MITSUBISHI

Nr. 10

PART	REFERENCE	REMARKS	
	1. 12410-0000 2. 12410-0000 3. 12410-0000 4. 12410-0000 5. 12410-0000 6. 12410-0000	1. 12410-0000 (oil and trap regu) 2. 12410-0000 3. 12410-0000 4. 12410-0000	1 2 3 4
	1. 12410-0000 2. 12410-0000 3. 12410-0000 4. 12410-0000	1. 12410-0000 2. 12410-0000	
	1. 12410-0000 2. 12410-0000 3. 12410-0000 4. 12410-0000 5. 12410-0000	1. 12410-0000 2. 12410-0000 3. 12410-0000 4. 12410-0000	
	1. 12410-0000 2. 12410-0000 3. 12410-0000 4. 12410-0000 5. 12410-0000 6. 12410-0000 7. 12410-0000 8. 12410-0000 9. 12410-0000 10. 12410-0000	1. 12410-0000 (cylinder head) 2. 12410-0000 3. 12410-0000 4. 12410-0000 5. 12410-0000 6. 12410-0000 7. 12410-0000 8. 12410-0000 9. 12410-0000 10. 12410-0000	

For any other engine parts please contact us!

Engina parte uzda la:

MITSUBISHI 545

TYPE Diesel
4 Cyl
Bore 94 mm

IN MITSUBISHI

Nr. 10

PART	REFERENCE	REMARKS	
	1. 12410-0000 2. 12410-0000 3. 12410-0000 4. 12410-0000	1. 12410-0000 2. 12410-0000 3. 12410-0000 4. 12410-0000	
	1. 12410-0000 2. 12410-0000	1. 12410-0000 2. 12410-0000	
	1. 12410-0000 2. 12410-0000 3. 12410-0000 4. 12410-0000 5. 12410-0000	1. 12410-0000 2. 12410-0000 3. 12410-0000 4. 12410-0000 5. 12410-0000	
	1. 12410-0000 2. 12410-0000 3. 12410-0000 4. 12410-0000 5. 12410-0000 6. 12410-0000 7. 12410-0000 8. 12410-0000 9. 12410-0000 10. 12410-0000	1. 12410-0000 (cylinder head) 2. 12410-0000 3. 12410-0000 4. 12410-0000 5. 12410-0000 6. 12410-0000 7. 12410-0000 8. 12410-0000 9. 12410-0000 10. 12410-0000	

For any other engine parts please contact us!

Engina parte uzda la:

NISSAN H20

TYPE Gasoline
4 Cyl
Bore 87.2 mm

IN NISSAN
TCM
KOMATSU

Nr. 5

PART	REFERENCE	REMARKS	
	1. 12410-0000 2. 12410-0000 3. 12410-0000 4. 12410-0000 5. 12410-0000 6. 12410-0000	1. 12410-0000 (oil and trap regu) 2. 12410-0000 3. 12410-0000 4. 12410-0000 5. 12410-0000 6. 12410-0000	1 2 3 4 5 6
	1. 12410-0000 2. 12410-0000 3. 12410-0000 4. 12410-0000	1. 12410-0000 2. 12410-0000 3. 12410-0000 4. 12410-0000	
	1. 12410-0000 2. 12410-0000 3. 12410-0000 4. 12410-0000 5. 12410-0000	1. 12410-0000 2. 12410-0000 3. 12410-0000 4. 12410-0000 5. 12410-0000	
	1. 12410-0000 2. 12410-0000 3. 12410-0000 4. 12410-0000 5. 12410-0000 6. 12410-0000 7. 12410-0000 8. 12410-0000 9. 12410-0000 10. 12410-0000	1. 12410-0000 (cylinder head) 2. 12410-0000 3. 12410-0000 4. 12410-0000 5. 12410-0000 6. 12410-0000 7. 12410-0000 8. 12410-0000 9. 12410-0000 10. 12410-0000	

For any other engine parts please contact us!

Engina parte uzda la:

NISSAN H20

TYPE Gasoline
4 Cyl
Bore 87.2 mm

IN NISSAN
TCM
KOMATSU

Nr. 5

PART	REFERENCE	REMARKS	
	1. 12410-0000 2. 12410-0000 3. 12410-0000 4. 12410-0000	1. 12410-0000 (oil and trap regu) 2. 12410-0000 3. 12410-0000 4. 12410-0000	
	1. 12410-0000 2. 12410-0000	1. 12410-0000 2. 12410-0000	
	1. 12410-0000 2. 12410-0000 3. 12410-0000 4. 12410-0000 5. 12410-0000	1. 12410-0000 2. 12410-0000 3. 12410-0000 4. 12410-0000 5. 12410-0000	
	1. 12410-0000 2. 12410-0000 3. 12410-0000 4. 12410-0000 5. 12410-0000 6. 12410-0000 7. 12410-0000 8. 12410-0000 9. 12410-0000 10. 12410-0000	1. 12410-0000 (cylinder head) 2. 12410-0000 3. 12410-0000 4. 12410-0000 5. 12410-0000 6. 12410-0000 7. 12410-0000 8. 12410-0000 9. 12410-0000 10. 12410-0000	

For any other engine parts please contact us!

EXCHANGE ENGINES - WITH 6 MONTH WARRANTY



**TOYOTA
NISSAN
MITSUBISHI
KOMATSU
ISUZU
MAZDA**

**CONTINENTAL
PERKINS
WAUKESHA
FORD
GM
CATERPILLAR
CUMMINS
DETROIT
CHRYSLER**

**DEUTZ
VOLVO
MERCEDES
VOLKSWAGEN
FIAT-OM
PEUGEOT
RENAULT**

NEW AND REBUILT ENGINES

**Have your engine reconditioned.
Call us !!**



RECONDITIONED ENGINE PARTS



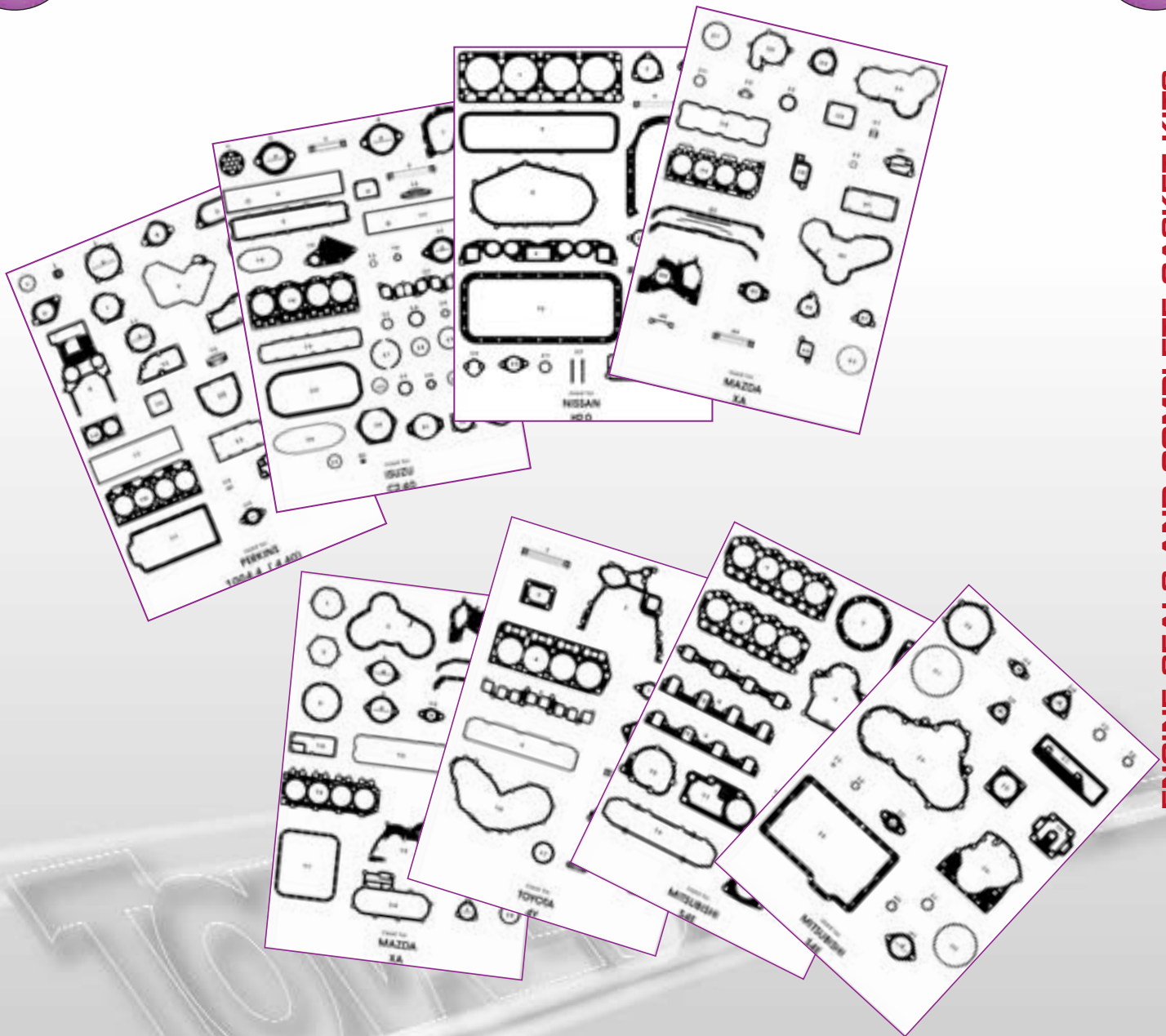
TOYOTA
NISSAN
MITSUBISHI
KOMATSU
ISUZU
MAZDA

CONTINENTAL
PERKINS
WAUKESHA
FORD
GM
CATERPILLAR
CUMMINS
DETROIT
CHRYSLER

DEUTZ
VOLVO
MERCEDES
VOLKSWAGEN
FIAT-OM
PEUGEOT
RENAULT

Reconditioned engine parts available !!
Call us.





ENGINE SEALS AND COMPLETE GASKET KITS

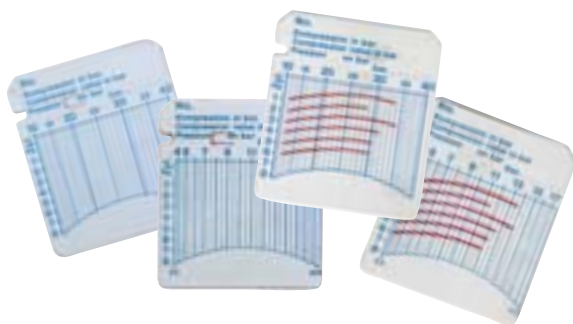
We stock cylinder head gaskets, valve cover gaskets, top kits and complete engine gasket kits !

TORQUE WRENCH



Cap. Nm	length mm		
6-30	410	1/4"	REF 107TA1661
10-100	490	3/8"	REF 107TA1662
40-200	540	1/2"	REF 107TA1663
70-340	660	1/2"	REF 107TA1664
extra ratchet			
		1/4"	REF 107TA1665
		3/8"	REF 107TA1666
		1/2"	REF 107TA1667

PRESSURE GAUGE



FOR DIESEL ENGINES

REF 106TA6766	complete kit, with case
REF 106TA6767	pressure gauge with 360mm hose
REF 106TA6768	set of 100 compression cards
REF 106TA6769	remote start cable
REF 106TA6770	attachment for hard to reach cylinders



FOR GASOLINE & LPG ENGINES

REF 107TA7658	complete kit, with case
REF 107TA7659	pressure gauge with 530mm hose
REF 106TA3063	set of 100 compression cards
REF 106TA6769	remote start cable
REF 107TA7660	attachment for hard to reach cylinders

ENGINE REMOVAL HOOK

REF 107TA1668

To remove engines without removing overhead guard from forklift truck

Capacity 300kg

Delivered with 1 swivel hook



RUNNING-IN OIL

*sold per
5L*

**REF 107TA1669**

special engine oil for running-in rebuilt engines

TECHNICAL DETAIL: OIL LEVEL GAUGES

FAX FORM: OIL LEVEL GAUGES

EXAMPLES



Company:

Customer code:

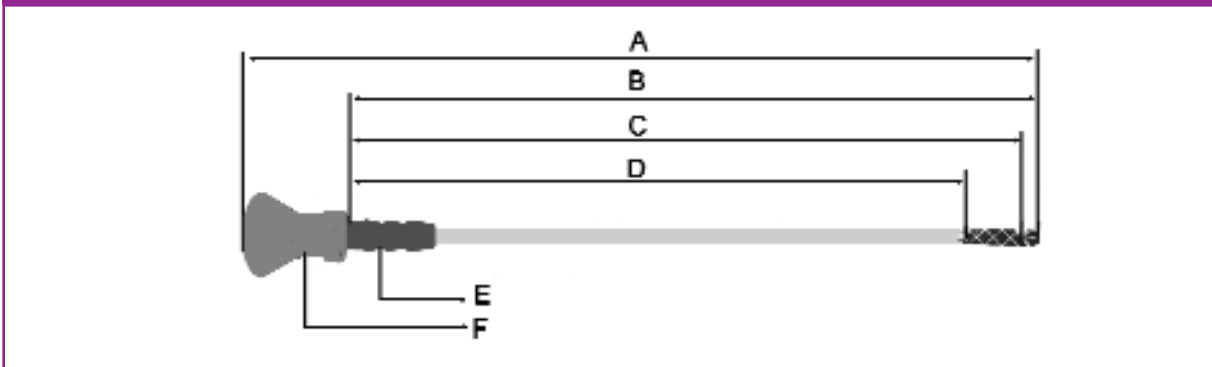
Name:

Fax number:

Truck make:

Truck type: Serial nr:

TECHNICAL DETAIL

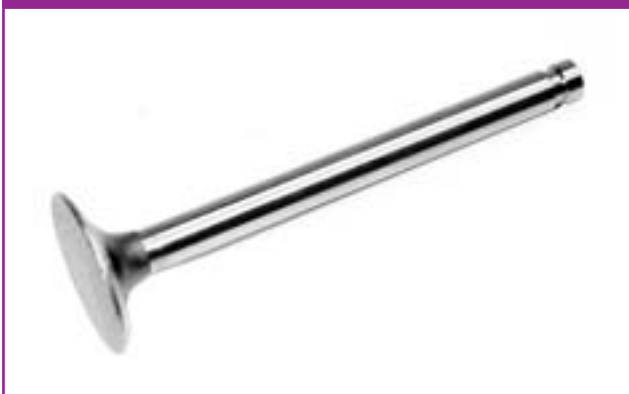


- ① **A = Overall length**
- ② **B = Total length from handle down**
- ③ **C = Minimum oil level depth from handle down (see pict.)**
- ④ **D = Maximum oil level depth from handle down (see pict.)**
- ⑤ **E = Diameter of the fitting**
- ⑥ **F = Code for the handle (see below)**

TYPE A	TYPE B	TYPE C	TYPE D	TYPE E	TYPE F
flat metal, curled	round metal, curled	T-piece	PVC	Screw-on	Breather cap

TECHNICAL DETAIL: VALVES, INTAKE & EXHAUST

EXAMPLE



Company:

Customer code:

Name:

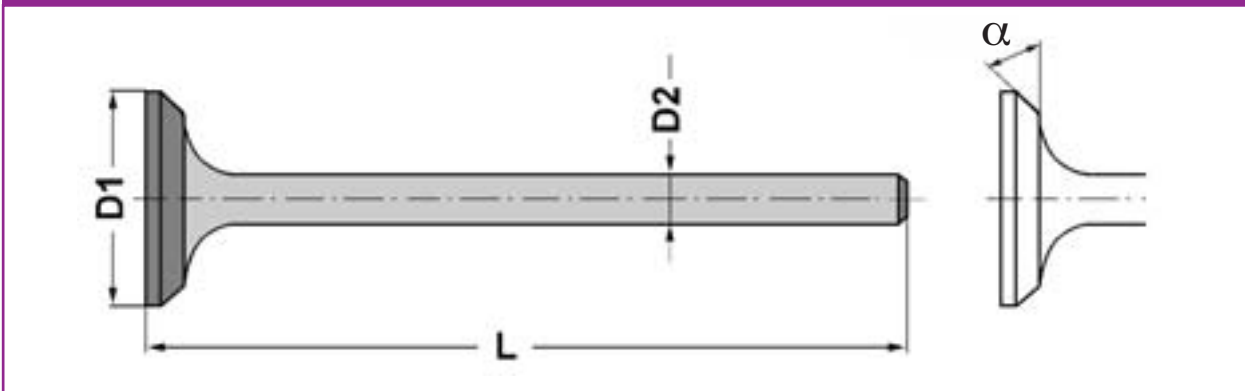
Fax number:

Truck make:

Truck type: Serial nr.:

FAX FORM: VALVES

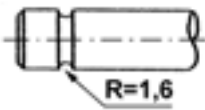
DIMENSIONS



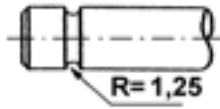
- 1 D1 Valve head diameter, see picture (mm)
- 2 D2 Valve stem diameter, see picture (mm)
- 3 L Total length, see picture (mm)
- 4 TY-AS Type of shaft end, see diagrams on the next page
- 5 α Angle (alpha), see diagram, mostly 30° or 45°

TECHNICAL DETAIL: VALVES INTAKE & EXHAUST

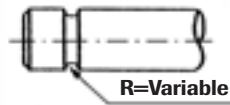
A



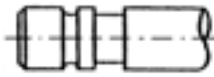
AA



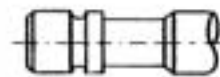
X



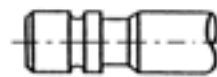
AB



AC



AL



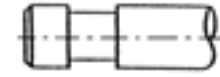
AAA



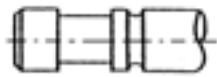
B



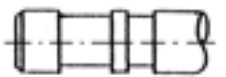
C



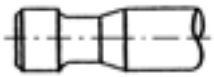
CA



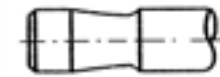
CB



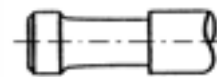
E



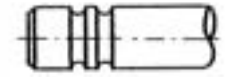
F



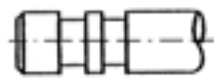
FO



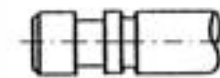
H



I



IA



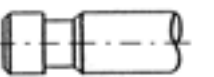
IL



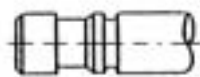
K



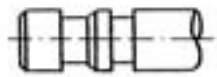
L



LA



LB



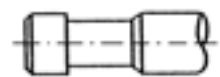
N



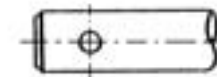
P



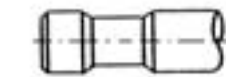
Q



R



U



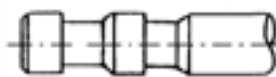
V



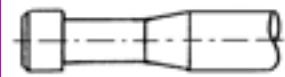
Z



LC



NN



TECHNICAL DETAIL: EXPANSION PLUGS

EXAMPLE: TYPE A



EXAMPLE: TYPE B



Company:

Customer code:

Name:

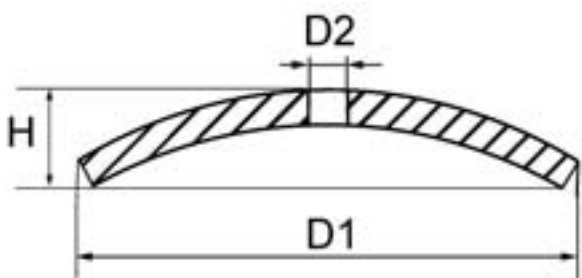
Fax number:

Truck make:

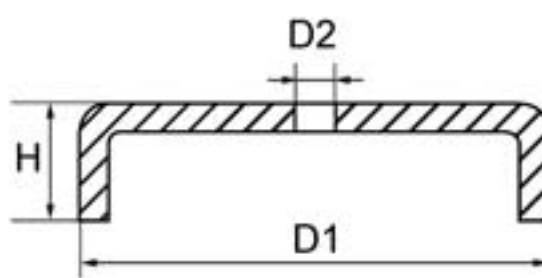
Truck type: Serial nr.:

- 1 TY See types
- 2 D1-M Outer diameter in mm
- 3 D1-D If outer diameter is given in inches, please fill out here
- 4 D2 See pictures: hole not always present (mm)
- 5 H Total height: see diagrams (mm)

TYPE A



TYPE B



FAX FORM: EXPANSION PLUGS



TURBOS & NOTES

TURBOS



We offer a full range of TURBOS !

NOTES

Handwritten notes area with horizontal lines. A large, faint watermark reading 'TOWERSOURCE' is visible across the page.